

ELEVATION A



# EMERSON

SLAB ON GRADE

1,251 sf  
3 BED // 2 BATH // 2 CAR  
DIMENSIONS 32' x 62'

ELEVATION B



ELEVATION C



6900 Westown Parkway | West Des Moines, IA 50266 | 515.276.2349 | hubbellhomes.com

Hubbell Homes is an equal housing opportunity builder. Builder reserves the right to initiate changes without notice or obligation at any time to homes, terms, availability, community information, pricing, promotions, incentives, included features, floor plans, materials, design, elevations, designs, materials, dimensions, amenities, and prior sale. Square footages, measurements, and dimensions are approximate and will vary based on foundation type and options selected. Floor plans, pictures, artist renderings, photographs, colors, features, and sizes are artist's conception or model renderings and are for illustration purposes only, are not intended to show specific detailing, and will vary in specifications from homes as built. Plans are the property of Builder, provide as a courtesy. Options and upgrades are available at an additional cost and are subject to availability and construction cut-off dates. This material shall not constitute a valid offer. For additional information, please contact sales agent, or Hubbell Homes. Floor plans are the property of Hubbell Homes, L.C. and its affiliates and are protected by U.S. copyright laws. All rights reserved. ©Hubbell Homes 2015.

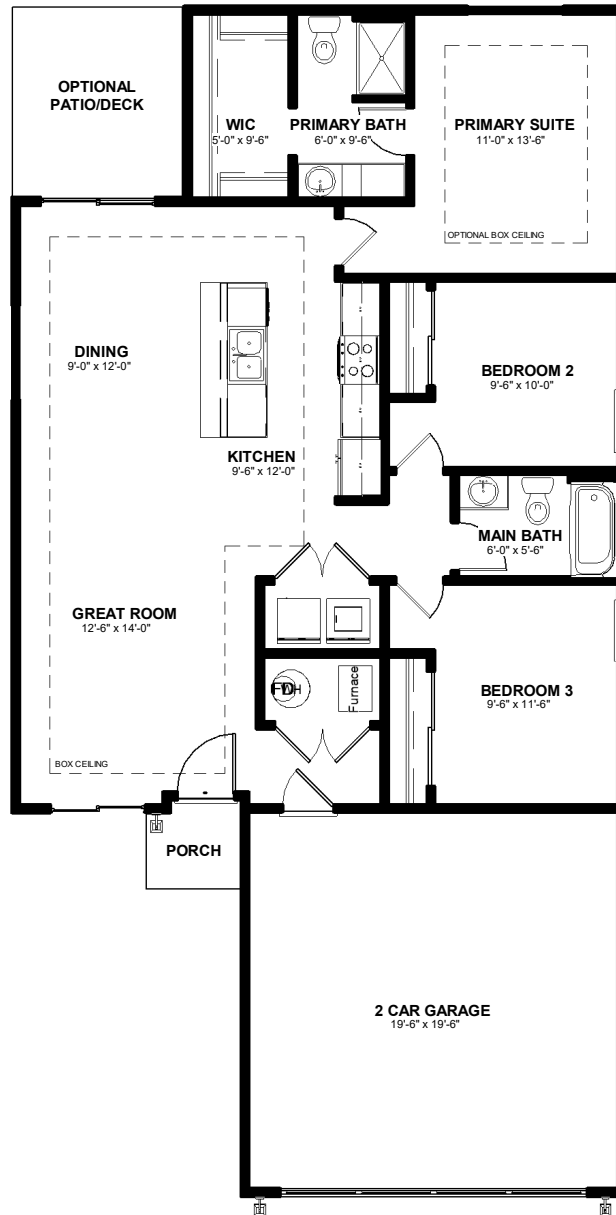




# EMERSON

SLAB ON GRADE

1,251 sf  
3 BED // 2 BATH // 2 CAR  
DIMENSIONS 32' x 62'



6900 Westown Parkway | West Des Moines, IA 50266 | 515.276.2349 | hubbellhomes.com

Hubbell Homes is an equal housing opportunity builder. Builder reserves the right to initiate changes without notice or obligation at any time to homes, terms, availability, community information, pricing, promotions, incentives, included features, floor plans, materials, design, elevations, designs, materials, dimensions, amenities, and prior sale. Square footages, measurements, and dimensions are approximate and will vary based on foundation type and options selected. Floor plans, pictures, artist renderings, photographs, colors, features, and sizes are artist's conception or model renderings and are for illustration purposes only, are not intended to show specific detailing, and will vary in specifications from homes as built. Plans are the property of Builder, provide as a courtesy. Options and upgrades are available at an additional cost and are subject to availability and construction cut-off dates. This material shall not constitute a valid offer. For additional information, please contact sales agent, or Hubbell Homes. Floor plans are the property of Hubbell Homes, L.C. and its affiliates and are protected by U.S. copyright laws. All rights reserved. ©Hubbell Homes 2015.

#### UPGRADE OPTIONS

- Mid-wall Electric Fireplace
- Primary Bath with Two Sinks
- Box Ceiling in Primary Suite
- Patio or Deck with Stairs



Mid-Wall Electric Fireplace

EMERSON  
SLAB ON GRADE

1,251 sf  
3 BED // 2 BATH // 2 CAR  
DIMENSIONS 32' x 62'