

GLASSWATER

TOTAL: 1,860 SF

ELEVATION A

3  3.5  2 

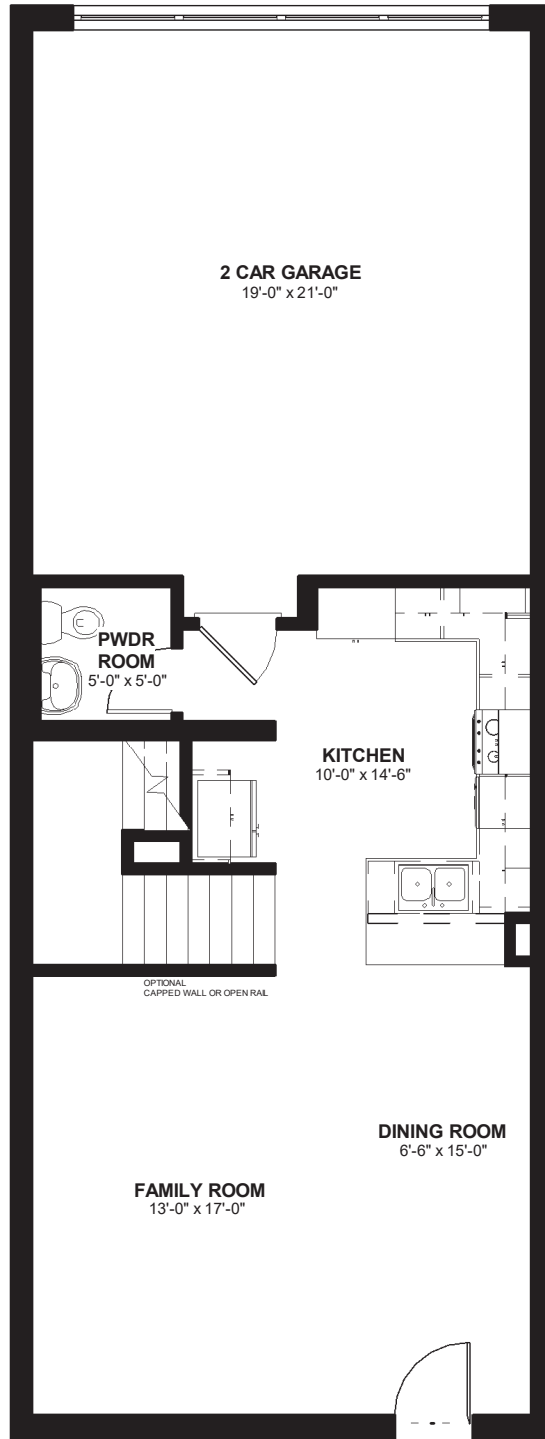


515.276.2349 | HubbellHomes.com
6900 Westown Parkway | West Des Moines, IA 50266

 **Hubbell
HOMES**
URBAN collection

© 2018 Hubbell Homes. All Rights Reserved. Drawings are artist's renderings and not architectural blueprints. Dimensions are approximate. Dimensions and options may vary. Drawings may show upgrades that are not standard. Information subject to change without notice. Trade Secret and proprietary information per chapter 550 of Iowa code. This information is believed to be accurate and true, however cannot be guaranteed by the listing firm or agent and is not a substitute for any verification, inspection or warranty the purchaser may wish to obtain. An Equal Opportunity Company. Equal Housing Opportunity.

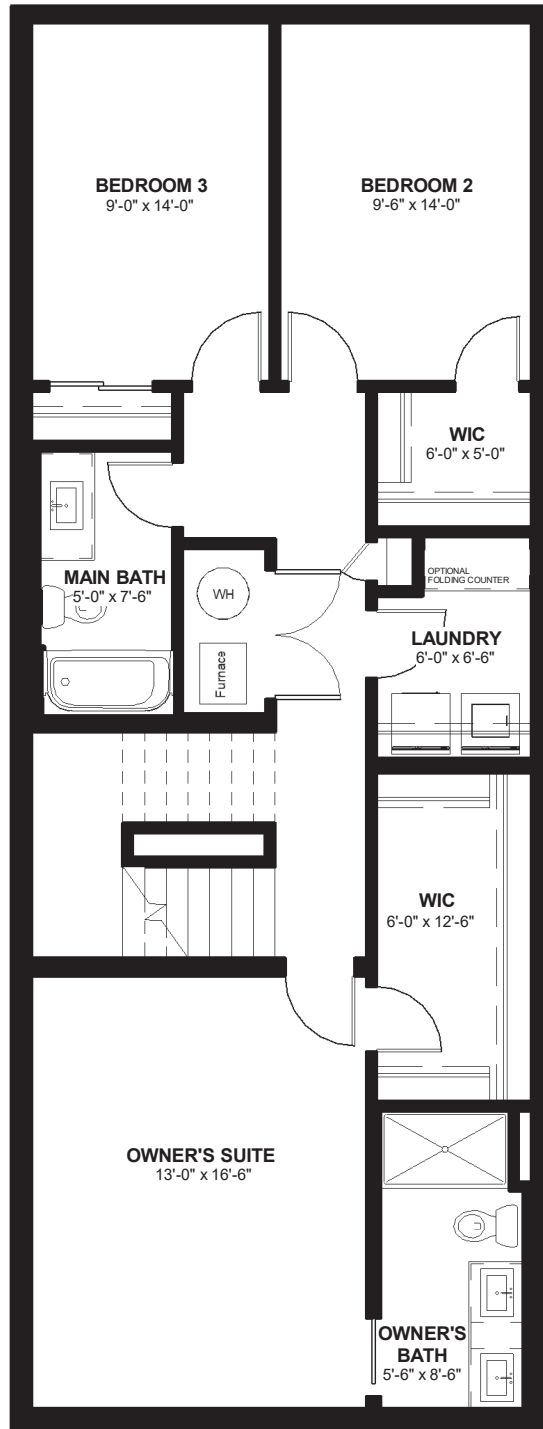
MAIN LEVEL



515.276.2349 | HubbellHomes.com
6900 Westown Parkway | West Des Moines, IA 50266



SECOND LEVEL



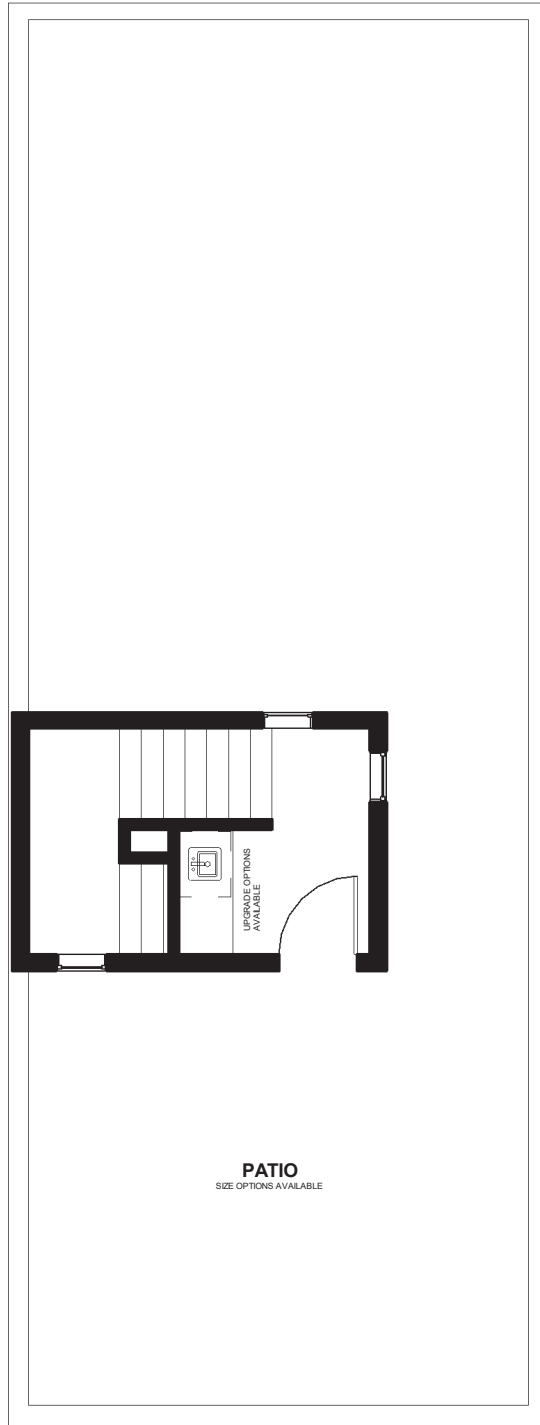
515.276.2349 | HubbellHomes.com
6900 Westown Parkway | West Des Moines, IA 50266



GLASSWATER

TOTAL: 1,860 SF

THIRD LEVEL



515.276.2349 | HubbellHomes.com
6900 Westown Parkway | West Des Moines, IA 50266



© 2018 Hubbell Homes. All Rights Reserved. Drawings are artist's renderings and not architectural blueprints. Dimensions are approximate. Dimensions and options may vary. Drawings may show upgrades that are not standard. Information subject to change without notice. Trade Secret and proprietary information per chapter 550 of Iowa code. This information is believed to be accurate and true, however cannot be guaranteed by the listing firm or agent and is not a substitute for any verification, inspection or warranty the purchaser may wish to obtain. An Equal Opportunity Company. Equal Housing Opportunity.